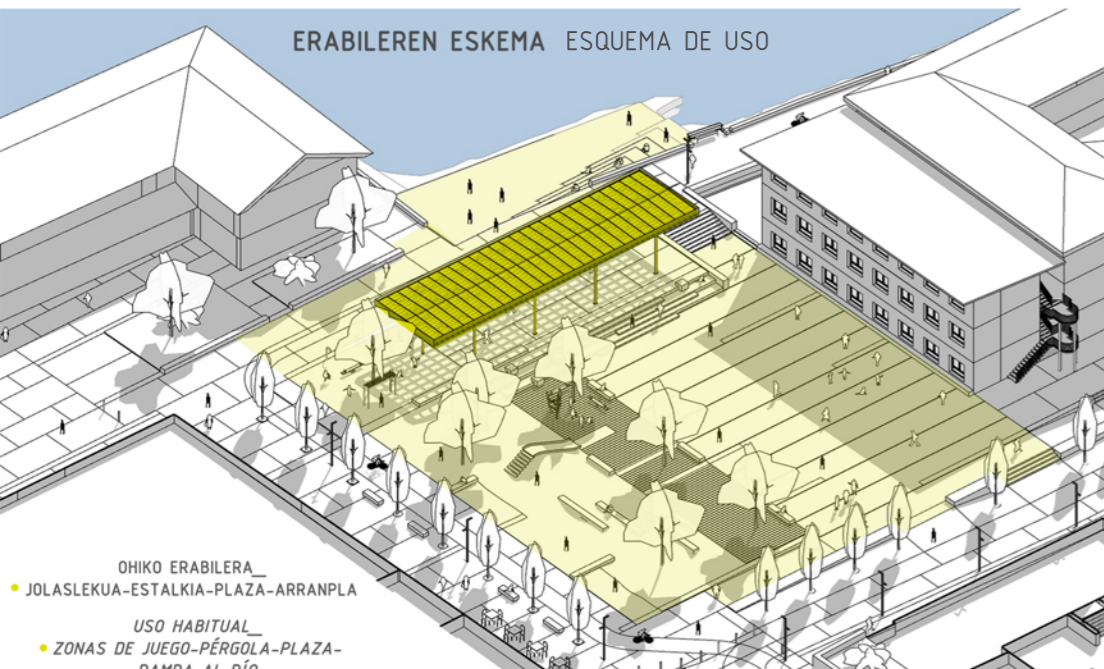




PLAZA PLAZA



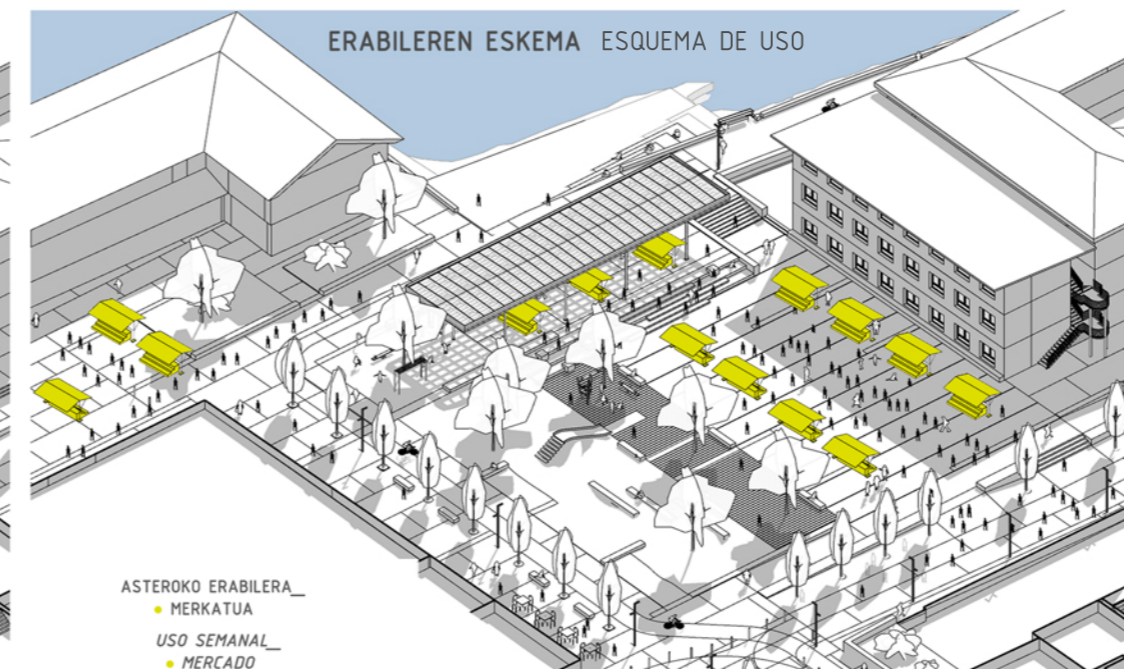
AXONOMETRIA AXONOMETRIA



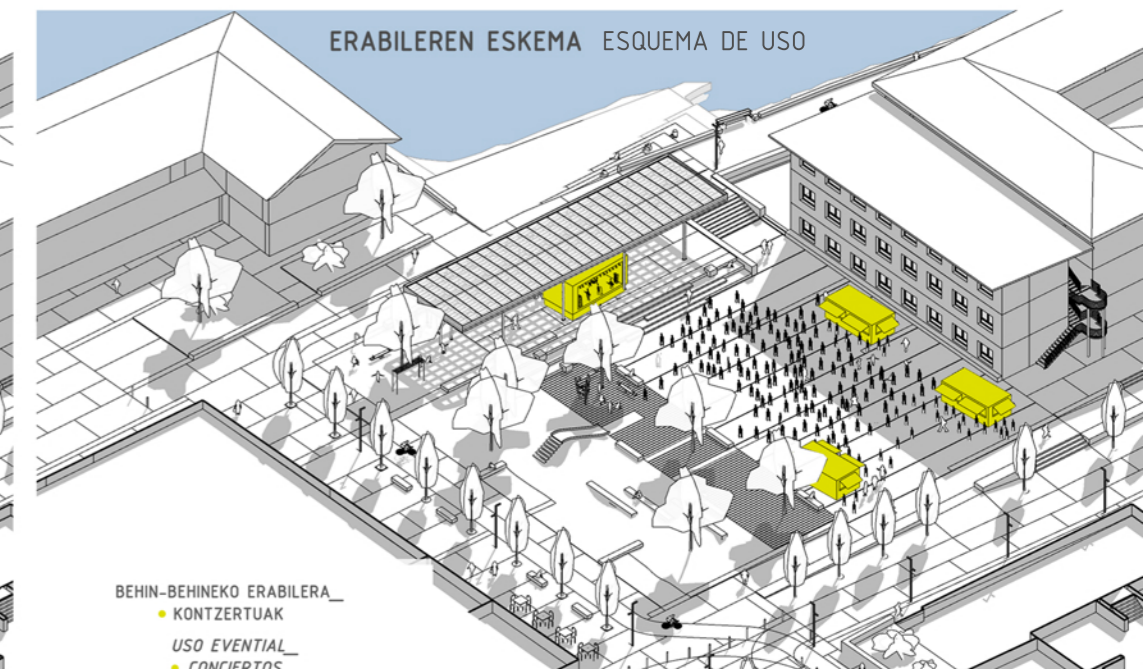
ERABILEREN ESKEMA ESQUEMA DE USO



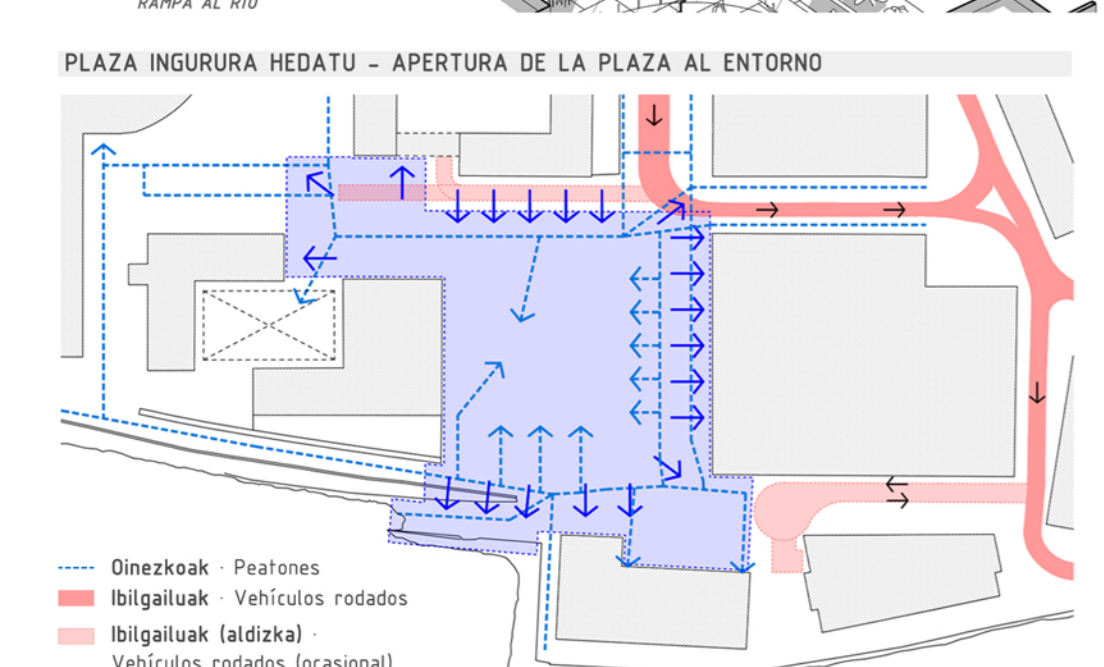
ERABILEREN ESKEMA ESQUEMA DE USO



ERABILEREN ESKEMA ESQUEMA DE USO



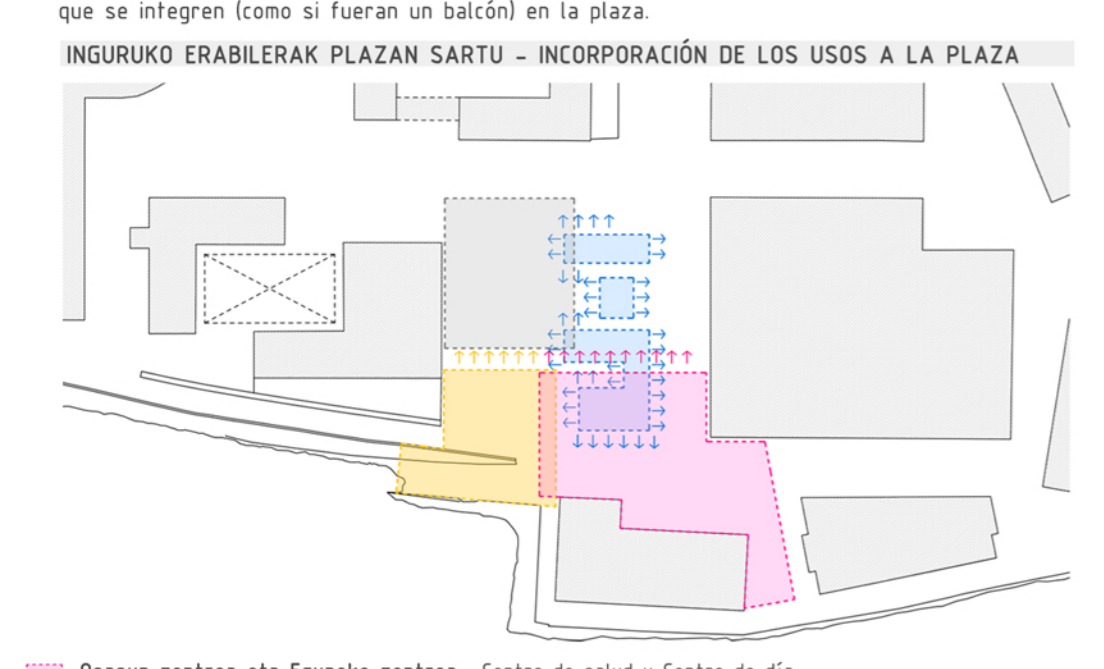
ERABILEREN ESKEMA ESQUEMA DE USO



PLAZA INGURURA HEDATU - APERTURA DE LA PLAZA AL ENTORNO

Legend for pedestrian and vehicle routes: Oinezkoak - Peatones, Ibilgailuak - Vehículos rodados, Ibilgailuak (aldizka) - Vehículos rodados (localosional).

Text describing the pedestrianization of the plaza and the integration of various uses.

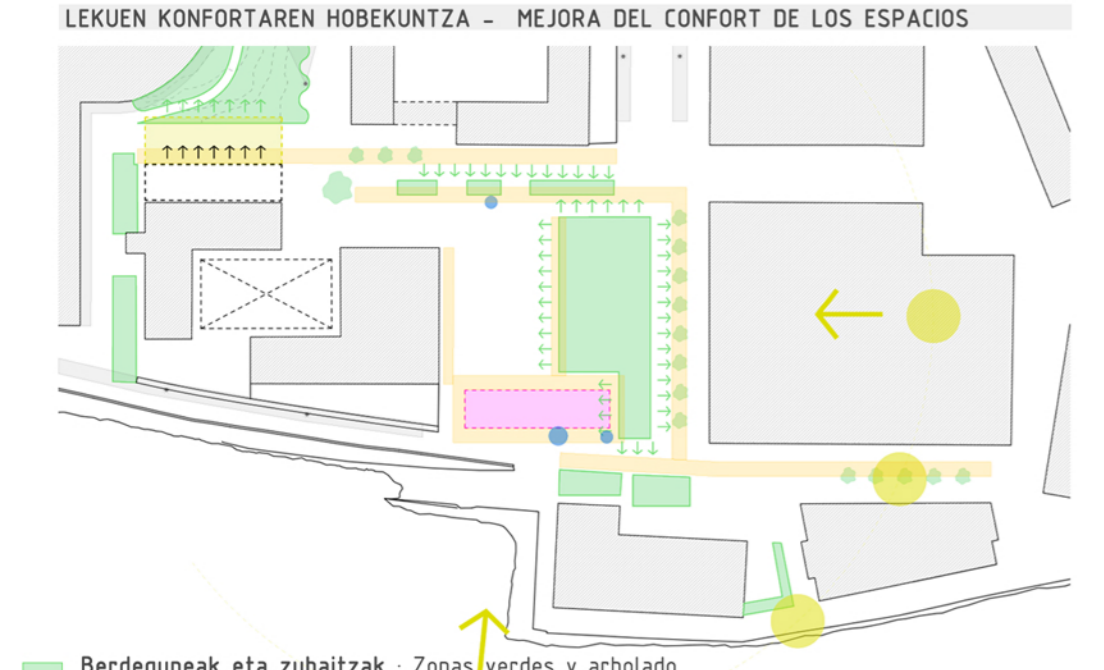


INGURUKO ERABILERAK PLAZAN SARTU - INCORPORACIÓN DE LOS USOS A LA PLAZA

Legend for plaza uses: Osasun zentroa eta Eguneko zentroa, Bainua hartzeko arranja, Jolaslekuak, Orioko Herri Ikastola, Erabilera askotariko espazio lau zabala.

Text describing the integration of different uses and the pedestrianization of the plaza.

Text describing the simultaneous use of the plaza for different activities.



LEKUKO KONFORTAREN HOBEKUNTZA - MEJORA DEL CONFORT DE LOS ESPACIOS

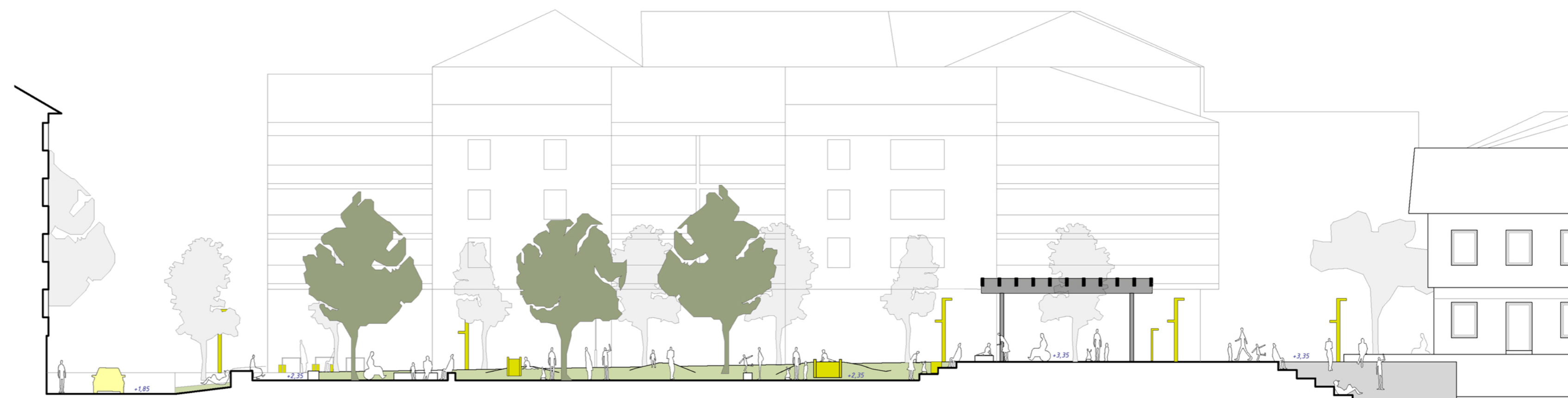
Legend for comfort improvement: Berdeguneak eta zuhaitzak, Pergola, Iparraldeko patioaren hedapena, Argiteria, Iturriak eta dutxak.

Text describing the improvement of thermal and air quality through green spaces and trees.

Text describing the improvement of thermal and air quality through green spaces and trees.



OIN NAGUSIA PLANTA GENERAL E 1/500 E 1/500



ZEHARKAKO EBAKETA SECCIÓN TRANSVERSAL A-A' A-A' E 1/200 E 1/200



IBAI HERTZEKO PASALEKUA PASEO MARTÍMO



PERGOLA PÉRGOLA



IKASTOLAREN SARRERA ENTRADA IKASTOLA